

PEDIGREE PROCESS

Ashley Fletcher

PEDIGREE Coordinator

Cancer Epidemiology Centre

Cancer Council Victoria

› ABOUT PEDIGREE

PEDIGREE is a resource of 100,000 people, 20,000 cancer families, 1,000,000 bio-specimens, data, researchers and community representatives established to conduct collaborative research on cancer.

It comprises a cluster of research and technology platforms for studying the genetic and environmental associations with the risk and prognosis of some of the common cancers that affect Australians, using novel population-based family case-control and cohort study designs complemented by multiple-case families ascertained through clinics and/or the community. It brings together facilities with similar purposes across the nation and has established ties to international research consortia.

It is accessible, in collaboration, to scientifically meritorious and ethically approved Australian and international research proposals. It is supported by several major institutions and has a transparent, accountable and adaptable governance system.

ABOUT PEDIGREE

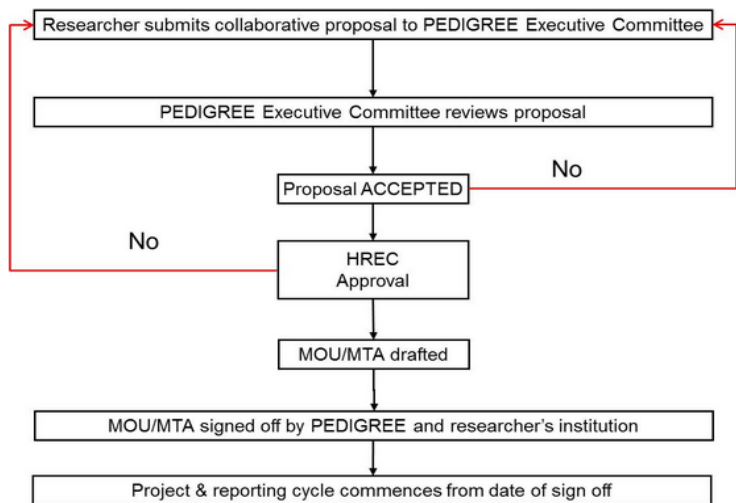
- [Structure](#) +
- [Policies and Forms](#)
- [Projects and Publications](#) +
- [News and Events](#) +
- [Links](#)
- [Contact Us](#)



Project Registration

The purpose of PEDIGREE is to progress the cancer control objectives of The Cancer Council Victoria and University of Melbourne by developing and maintaining high quality resources for epidemiological research. PEDIGREE has a significant asset in the data and biospecimen information it has collected through its extensive research studies. The data and biospecimens are available to researchers on a cost recovery basis. Prices and availability will be confirmed via an application of an Expression of Interest.

Requests to collaborate on projects using data or biospecimens from PEDIGREE are assessed by the PEDIGREE Executive Committee.



Health 2020 or the Prostate Cancer Program

To access resources from the Cancer Council Victoria based research programs, Health 2020 or Prostate Cancer, please complete an Expression of Interest and email to the [PEDIGREE Co-ordinator](#). Once this has been approved please send the Data Request form to the [PEDIGREE Co-ordinator](#).

[Expression of Interest - Online EOI Form](#)

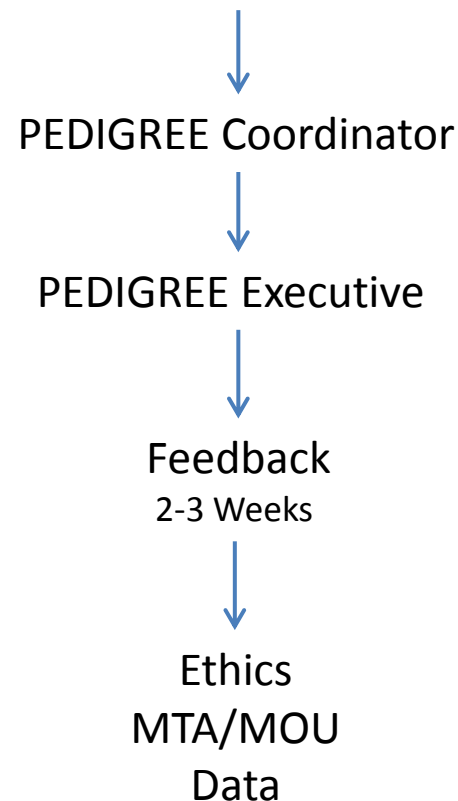
[Data Request Form](#)

[Progress Report Form](#)

ABCFR and ACCFR

To access the University of Melbourne based resources, the Australian Breast Cancer Family Registry (ABCFR) or Australasian Colorectal Cancer Family Register (ACCFR), please contact the [PEDIGREE Co-ordinator](#) for details.

Submit Expression of Interest



- Validation of a lung cancer risk prediction model
International Agency for Research on Cancer
- Carotenoids and reproductive lifespan study (CARL study)
University of South Australia
- Metabolically healthy obesity: an investigation of its predictors and outcomes across the life course
University of Tasmania
- Combining waist circumference and BMI for population-level identification of adults with excess adiposity
Baker IDI Heart and Diabetes Institute
- Novel analytical approaches to identify major molecular pathology determinants of poor survival from colorectal cancer
University of Melbourne
- Trends in alcohol consumption among Australian men and women during the post-WW II era: data from a large Melbourne cohort study
University of New South Wales
- Physical activity and age-related macular degeneration
Centre for Eye Research Australia (CERA)

Publication Registration

PUBLICATION PRINCIPLES

All publications that arise from the analysis of PEDIGREE data, i.e., written articles, poster presentations and abstracts for oral presentations, shall adhere to the uniform requirements of the [International Committee of Medical Journal Editors \(ICMJE\)](#). The only exceptions are citations, references and other matters of style obliged to conform to the house style of a publisher. All publications using PEDIGREE resource are required to be [registered](#) with the [PEDIGREE Coordinator](#).

There will be no honorary/courtesy authorship. Each author needs to be capable of taking public responsibility for the publication. The uniform requirements for manuscripts submitted to medical journals state that "*authorship credit should be based only on substantial contribution to*

- (a) *conception and design, or analysis and interpretation of data; and to*
- (b) *drafting the article or revising it critically for important intellectual content; and on*
- (c) *final approval of the version to be published.*

Conditions (a), (b), and (c) must all be met. Participation solely in the acquisition of funding or the collection of data does not justify authorship."

Duplicate or redundant publication is the publication of a paper that overlaps substantially with one already published. The uniform requirements permit such publication only when a complete report follows publication of a preliminary report. Any such work should be referred to in the new paper and the Editor of the journal has to be informed about possible redundant or duplicate publication.

Further information can be obtained from the [Committee on Publication Ethics \(COPE\)](#) or the Wiley-Blackwell position on the major ethical principles outlined at [Best Practice Guidelines on Publication Ethic: A Publisher's Perspective](#). The Council of Science Editors has [Recommendations for Group-Author Articles in Scientific Journals and Bibliometric Databases](#) and other related [Policies](#).

PEDIGREE PUBLICATION FORMS

[Publication Registration Form - Online Version](#)

[Statement of Authorship](#)

[Checklist for Responsible Author of Submitted Manuscript](#)

[Coversheet for Submission of Final Manuscript](#)

[Successful Publication Notification Online Form](#)

Submit Publication Registration



PEDIGREE Coordinator



PEDIGREE Executive



Authors
Overlap
Clearly stated

Feedback

1-2 Weeks

Publication Registration

PUBLICATION PRINCIPLES

All publications that arise from the analysis of PEDIGREE data, i.e., written articles, poster presentations and abstracts for oral presentations, shall adhere to the uniform requirements of the [International Committee of Medical Journal Editors \(ICMJE\)](#). The only exceptions are citations, references and other matters of style obliged to conform to the house style of a publisher. All publications using PEDIGREE resource are required to be [registered](#) with the [PEDIGREE Coordinator](#).

There will be no honorary/courtesy authorship. Each author needs to be capable of taking public responsibility for the publication. The uniform requirements for manuscripts submitted to medical journals state that "*authorship credit should be based only on substantial contribution to*

- (a) *conception and design, or analysis and interpretation of data; and to*
- (b) *drafting the article or revising it critically for important intellectual content; and on*
- (c) *final approval of the version to be published.*

Conditions (a), (b), and (c) must all be met. Participation solely in the acquisition of funding or the collection of data does not justify authorship."

Duplicate or redundant publication is the publication of a paper that overlaps substantially with one already published. The uniform requirements permit such publication only when a complete report follows publication of a preliminary report. Any such work should be referred to in the new paper and the Editor of the journal has to be informed about possible redundant or duplicate publication.

Further information can be obtained from the [Committee on Publication Ethics \(COPE\)](#) or the Wiley-Blackwell position on the major ethical principles outlined at [Best Practice Guidelines on Publication Ethic: A Publisher's Perspective](#). The Council of Science Editors has [Recommendations for Group-Author Articles in Scientific Journals and Bibliometric Databases](#) and other related [Policies](#).

PEDIGREE PUBLICATION FORMS

[Publication Registration Form - Online Version](#)

[Statement of Authorship](#)

[Checklist for Responsible Author of Submitted Manuscript](#)

[Coversheet for Submission of Final Manuscript](#)

[Successful Publication Notification Online Form](#)

Submit Publication Registration



PEDIGREE Coordinator



PEDIGREE Executive



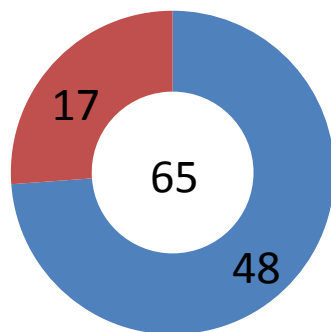
Authors
Overlap
Clearly stated

Feedback

1-2 Weeks

Publication Progress

Consortia 2013-14

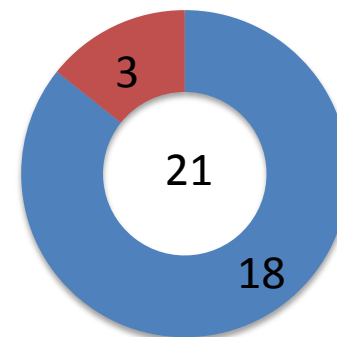


■ In preparation

■ Submitted

■ Registered

Publication Registrations



Published

MCCS	402
ABCFS	>200
ACCFS	>200
APCFS	72

International Consortia

Consortia	Started	Contribution	Publications
BCAC	2005	MCCS, ABCFS	49 (54)
OCAC	2005	MCCS	8 (65)
PRACTICAL	2008	MCCS, Prostate Program	10 (10)
COGS	2009	As above	43 (103)
Breast Cancer Family Register	1996	ABCFS	>200 (421)
Colon Cancer Family Register	1997	ACCFS	>200 (395)
NCI Cohort Consortium	2007	MCCS	18 (99)
ICPCG	1996	Prostate Program	12 (14)
Pooling Project of Prospective Studies of Diet and Cancer	1991	MCCS	9 (30 in 2009)
Asia Pacific Cohort Studies Collaboration	1999	MCCS	61 (65)

PEDIGREE

Pathology, Epidemiology, DNA,
Informatics and Genetics:
A Research Enabling Enterprise

Central List of Grants

The screenshot shows the EndNote web interface. The browser address bar displays 'www.myendnoteweb.com/EndNoteWeb.html'. The page title is 'ENDNOTE®'. The navigation menu includes 'My References', 'Collect', 'Organize', 'Format', and 'Options'. A sidebar on the left contains a 'Quick Search' box, 'My References' (101), and a 'ResearcherID' link. The main content area is titled 'All My References' and shows a list of references with columns for Author, Year, and Title. The references are sorted by Year, newest to oldest. A 'We've added storage to your EndNote' notification is visible in the top right corner.

Author	Year	Title
Giles, G.G.	2015-2020	Precision Public Health for major cancers - novel approaches to building the genetic, epigenetic and lifestyle knowledge base for assessing risk and prognosis
Fitzgerald, L.	2013-2015	Identifying biomarkers associated with clinically significant and fatal prostate cancer through genome wide mRNA expression and methylation analyses
Severi, G.	2013-2015	A large international epidemiological study to identify novel molecular markers of lung cancer risk and survival
Giles, G.G.	2013-2014	Methylation and the risk of urothelial cancers
English, D.	2013-2013	DNA methylation as a risk factor for colorectal cancer
Giles, G.G.	2012-2016	EMMA The epidemiology of multiple myeloma in Australia
Severi, G.	2012-2015	Risk and Prognostic Factors for Glioma in Australia
Baglietto, L.	2012-2014	Risk of recurrence after diagnosis of invasive breast cancer by molecular subtype as defined by ER, PR and HER2 status
Southey, M.C.	2012-2013	Methylation as a risk factor for prostate cancer
Jenkins, M.A.	2012-17	CRE for reducing the burden of colorectal cancer by optimising screening

Good

- Compatible data fields
- Sync with desktop Endnote
- Easy to manage sharing groups

Bad

- Unable to edit styles or import/export filters
- Unable to customise any settings